

Find the Best Buy for the situations below. SHOW WORK!

1. 5 candy bars for \$2.25 OR 8 candy bars for \$3.80? How much do you save per candy bar?

$$\begin{array}{r} \$2.25 = \underline{\$0.45} \\ 5 \text{ CB} \quad 1 \text{ CB} \end{array} \quad \begin{array}{r} \$3.80 = \underline{\$0.475} \\ 8 \text{ CB} \quad 1 \text{ CB} \end{array} \quad \begin{array}{r} .475 - .45 = .025 \\ \text{about } 3\text{¢} \end{array}$$

2. \$2.40 for a dozen eggs or \$1.75 for 6 eggs?

$$\begin{array}{r} \$2.40 = \underline{\$.20} \\ 12 \text{ eg} \quad 1 \text{ eg} \end{array} \quad \begin{array}{r} 1.75 = \underline{\$.29} \\ 6 \text{ eg} \quad 1 \text{ eg} \end{array}$$

Complete the Price Table below.

AMOUNT	Vegetable Soup	Chili
1 ounce	.37	.81
4 oz	1.48	\$3.25
9.5 oz	\$3.50	7.70
15 oz	5.55	12.15

Use the graph to answer the questions below.

3. Which product is the most expensive? How do you know this? Chocolate → steepest

4. Which is the cheapest product? How do you know? Sugar → less steep

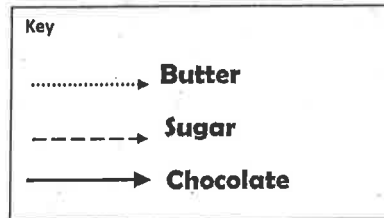
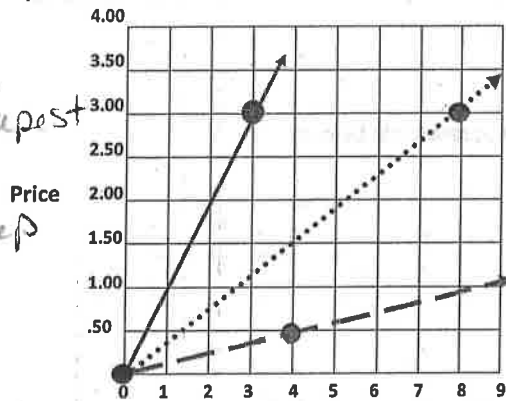
5. How much does 4 pounds of sugar cost? \$.50

6. How much does 4 pounds of butter cost? \$1.50

7. What is the unit price for Chocolate? \$1.00

8. About how much butter can you get with \$2.00

5 pounds



- Find the Unit Rate for the situations below. Don't forget the units!

9. You type 55 words in 5 minutes, what is your unit rate?

$$\frac{55 \text{ w}}{5 \text{ min}} = 11 \text{ words/minute}$$

10. You put \$45.95 worth of gas in your car. Your tank can hold 15 gallons of gas. What is the unit price?

$$\frac{\$45.95}{15 \text{ gal}} = \$3.06 \text{ /gal}$$

11. After filling up your car you drove 435 miles on the 15 gallons of gas you put in your car. What is the unit rate?

$$\frac{435 \text{ mil}}{15 \text{ gal}} = 29 \text{ mil/gal}$$

12. Your friend can go 480 miles on 15 gallons of gas. What is your friend's unit rate (miles per gallon).

$$\frac{480 \text{ mile}}{15 \text{ gall}} = 32 \text{ mile/gall}$$

13. Who has the better gas mileage, you or your friend? (Be careful, more miles to the gallon is a better rate!)

your friend

- Complete the rate table below.

14.

2	8	6	18	23	40
3	12	9	27	34.5	60

15. 4 coaches for 32 players

coaches	1	2	4	12	14
players	8	16	32	96	112