

Reflection HW

Name \_\_\_\_\_

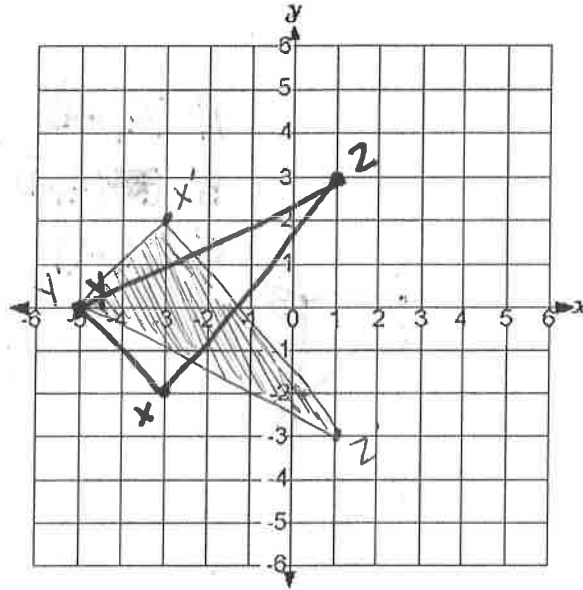
Reflect each figure as described. Write the coordinates of the figure's image after it has been reflected.

1. Reflect  $\triangle XYZ$  across the  $x$ -axis.  $X(-3, -2)$ ,  $Y(-5, 0)$ ,  $Z(1, 3)$

$X'(-3, 2)$

$Y'(-5, 0)$

$Z'(1, -3)$

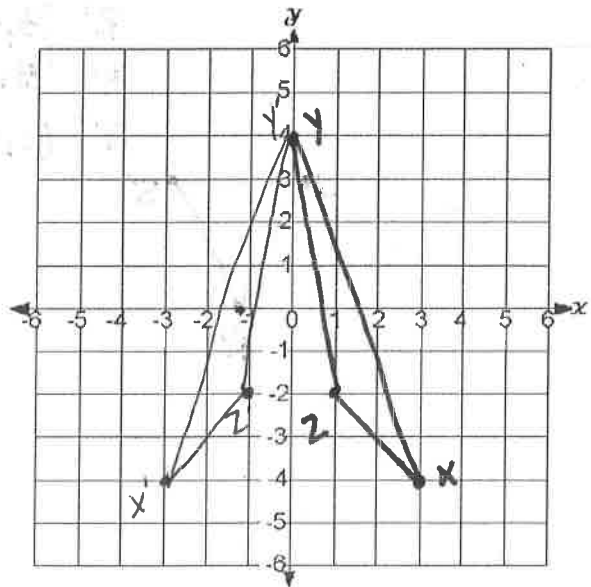


2. Reflect  $\triangle XYZ$  across the  $y$ -axis.  $X(3, -4)$ ,  $Y(0, 4)$ ,  $Z(1, -2)$

$X'(-3, -4)$

$Y'(0, 4)$

$Z'(-1, -2)$



3. Figure FGHIJ has the following coordinates.  
 $F(-4, 2)$   $G(-4, 4)$   $H(1, 4)$   $J(-1, -2)$

Give the coordinates of the image of figure FGHIJ if it is reflected across the:

a)  $y$ -axis

$F'(4, 2)$   $G'(4, 4)$

$H'(-1, 4)$   $J'(1, -2)$

b)  $x$ -axis

$F'(-4, -2)$   $G'(-4, -4)$

$H'(-1, -4)$   $J'(-1, 2)$